



金域旅行社有限公司
GOLDSTATES TRAVEL LTD.



Licence No.351117
www.ftu-travel.com.hk

工 俱 旅 遊



2713 5184



2715 6491



香港九龍土瓜灣馬頭涌道50號工人俱樂部大廈地下

中國銀行: 031-354-10675188 | 繳費靈商戶編號: 9903

限時優惠 | 曼谷 Bangkok

3日2夜 [出發日期: 2019年11月8日-2020年3月31日] | 3 Days 2 Nights [Travel Period: 08Nov2019-31Mar2020]

CATHAY PACIFIC

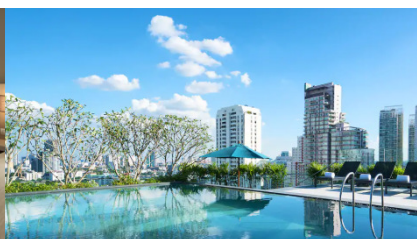
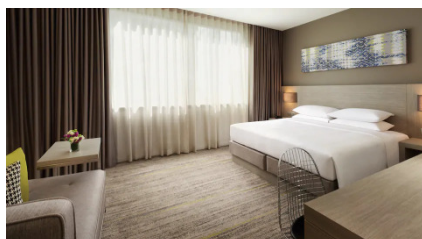


現凡訂購以下套票即送

來回曼谷機場至酒店之專車接送服務*

原價: 每車每程HK\$290

*名額有限, 先到先得



Hyatt Place Bangkok Sukhumvit

<https://www.hyatt.com/en-US/hotel/thailand/hyatt-place-bangkok-sukhumvit/bkkzs>



Phrom Phong BTS Station

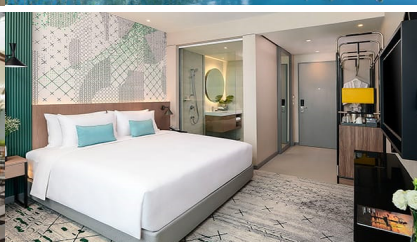
每位



Standard Room with breakfast

\$2,250+

(成人佔半房)



AVANI Sukhumvit Bangkok

<https://www.avanihotels.com/en/sukhumvit-bangkok>



On Nut BTS Station

每位



Avani Room with breakfast

\$2,340+

(成人佔半房)

2019
全新開幕



Grande Centre Point Ratchadamri

<https://www.grandecentrepointratchadamri.com>



Chitlom BTS Station

每位



Grand Deluxe Room with breakfast

\$2,690+

(成人佔半房)

※套票以淡季價格計算, 於旺季、假期前夕或大型節日期間出發, 需另付附加費。詳情向本社職員查詢作準。

限時優惠 | 曼谷 Bangkok

3日2夜[出發日期: 2019年11月8日-2020年3月31日] | 3 Days 2 Nights [Travel Period: 08Nov2019-31Mar2020]



Hotel Nikko Bangkok

2019
全新開幕

<http://www.nikkobangkok.com/>

Thong Lor BTS Station
Superior Room with breakfast

每位

\$2,740+

(成人佔半房)



Hyatt Regency Bangkok Sukhumvit

2019
全新開幕

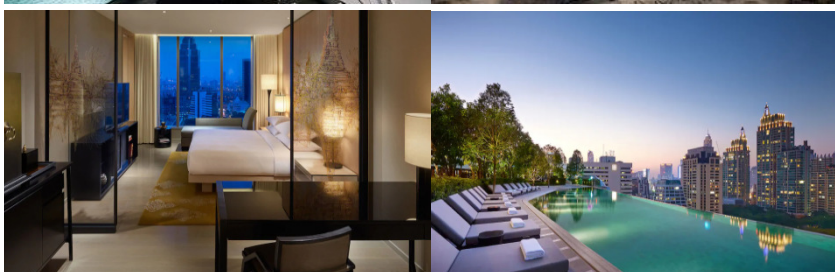
<https://www.hyatt.com/en-US/hotel/thailand/hyatt-regency-bangkok-sukhumvit/bkkhr>

Nana BTS Station
Standard Room with breakfast

每位

\$2,870+

(成人佔半房)



Park Hyatt Bangkok

<https://www.hyatt.com/en-US/hotel/thailand/park-hyatt-bangkok/bkkph/rooms>

Chitlom BTS Station
King/Twin Room (room only)

每位

\$4,200+

(成人佔半房)

國泰曼谷機票附加費表

CX Bangkok Airfare Surcharge

出發日期: 2019年11月8日-2020年3月31日

Travel Period: 08Nov2019-31Mar2020

2 人成行 GV2 (min. 2 adults)					
Departure	Adult	Child	Booking Class	Ticket Validity	
Early Bird Promotion					
08Nov-18Dec19, 29Dec-31Dec19	---	---	Q	2-7 Days	
Ticket must be issued on or before 15Nov					
Economy Class	08Nov-18Dec19, 29Dec19-20Jan20, 30Jan-31Mar20	170	130	Q	2-7 Days
	19Dec-20Dec19, 27Dec-28Dec19, 21Jan-22Jan20, 28Jan-29Jan20	1,120	840	N	
	21Dec-26Dec19	1,250	940	S	
		1,850	1,390	V	
		2,340	1,760	L	
23Jan-27Jan20	2,340	1,760	L		
Premium Economy Class	08Nov-18Dec19, 29Dec19-20Jan20, 30Jan-31Mar20	1,760	1,320	E	2-7 Days
	19Dec-20Dec19, 27Dec-28Dec19, 21Jan-22Jan20, 28Jan-29Jan20	1,960	1,470		
	21Dec-26Dec19, 23Jan-2Jan20	3,560	2,670		

Price Includes:

- Round trip economy class air ticket between Hong Kong and Bangkok on CX
- 2 nights hotel accommodation
- HK\$100,000 Travel Insurance [Zurich Insurance (Hong Kong) 24-hour emergency hotline+852-2886-3977]
- 0.15% TIC Levy

Child travel with min. 2 adults price:

- Twin / Triple Sharing adult price less: **\$330**

Terms & Conditions:

- Package price is per person (in HK\$) and valid between 08Nov19-31Mar20; and hotel stay must be completed by 31Mar20
- Booking class: Q (except specified period) Ticket validity: 2-7 days
- Minimum 2 adults travelling together on same outbound & inbound flights, and booking must be reserved under the same record locator (PNR) for all passengers
- "OSI: CX GV2 FARE IN DATE OUT DATE AT HOTEL NAME" must be input in OSI field of PNR
- Hotel star ratings are for reference only, please visit hotel's official website for more information
- Airport tax, HK security charge & fuel surcharge (if any) are not included
- Check whether the Security Bureau has issued any [Outbound Travel Alert](#) for your destination before firming up your travel plan to ensure personal safety
- All the above benefits are only applicable for maximum 2 persons per room per stay
- A non-refundable deposit of HK\$1000 per person required upon reservation
- Full payment must be made after confirmation with no refund
- Upon confirmation, any amendment is subject to our company's discretion
- All prices and conditions are subject to change without prior notice
- A service fee of HK\$30 will be collected for each ticket issued

費用包括:

- 國泰航空來回香港至曼谷經濟客位機票
- 2晚酒店住宿
- HK\$100,000旅遊保險 [蘇黎世保險(香港) 24小時緊急支援服務+852-2886-3977]
- 0.15%旅遊業賠償基金

小童最少要與兩位成人同行價錢:

- 佔床或三人房收費按成人減收: **\$330**

條款及細則:

- 以上套票價錢以每成人計算, 有效日期為2019年11月8日至2020年3月31日; 酒店入住必須於2020年3月31日或之前完成
- 訂位代號: Q (指定日子除外) 機票有效期: 2-7日
- 來回程均要最少兩位成人同行, 訂位時亦必須最少兩位客人在同一個PNR內
- PNR必須註明住宿酒店名稱及日期如下:
"OSI: CX GV2 FARE IN DATE OUT DATE AT HOTEL NAME"
- 酒店星級只供參考, 詳情請到訪酒店官方網頁查詢
- 費用並未包括兩地機場稅, 香港機場保安稅及燃油附加費(如適用)
- 為確保自身安全, 旅客在落實行程前, 應留意保安局有沒有對目的地發出**外遊警告**
- 以上優惠每次每房最多適用於兩位客人
- 訂位時須繳交訂金港幣每位\$1000
- 餘款需於機票及酒店確認後繳付及恕不退還
- 於機票及酒店確認後, 如需更改本公司擁有最終決定權
- 所有費用如有更改, 恕不另行通知
- 每發出機票乙張, 收取港幣\$30服務費

有關套票的條款及細則請參閱最後一頁



※套票以淡季價格計算, 於旺季、假期前夕或大型節日期間出發, 需另付附加費。詳情向本社職員查詢作準。